

# Who Fits Where?

**INSTRUCTIONS:** Draw a line matching the figures on the bottom to the scene in which they belong on top.



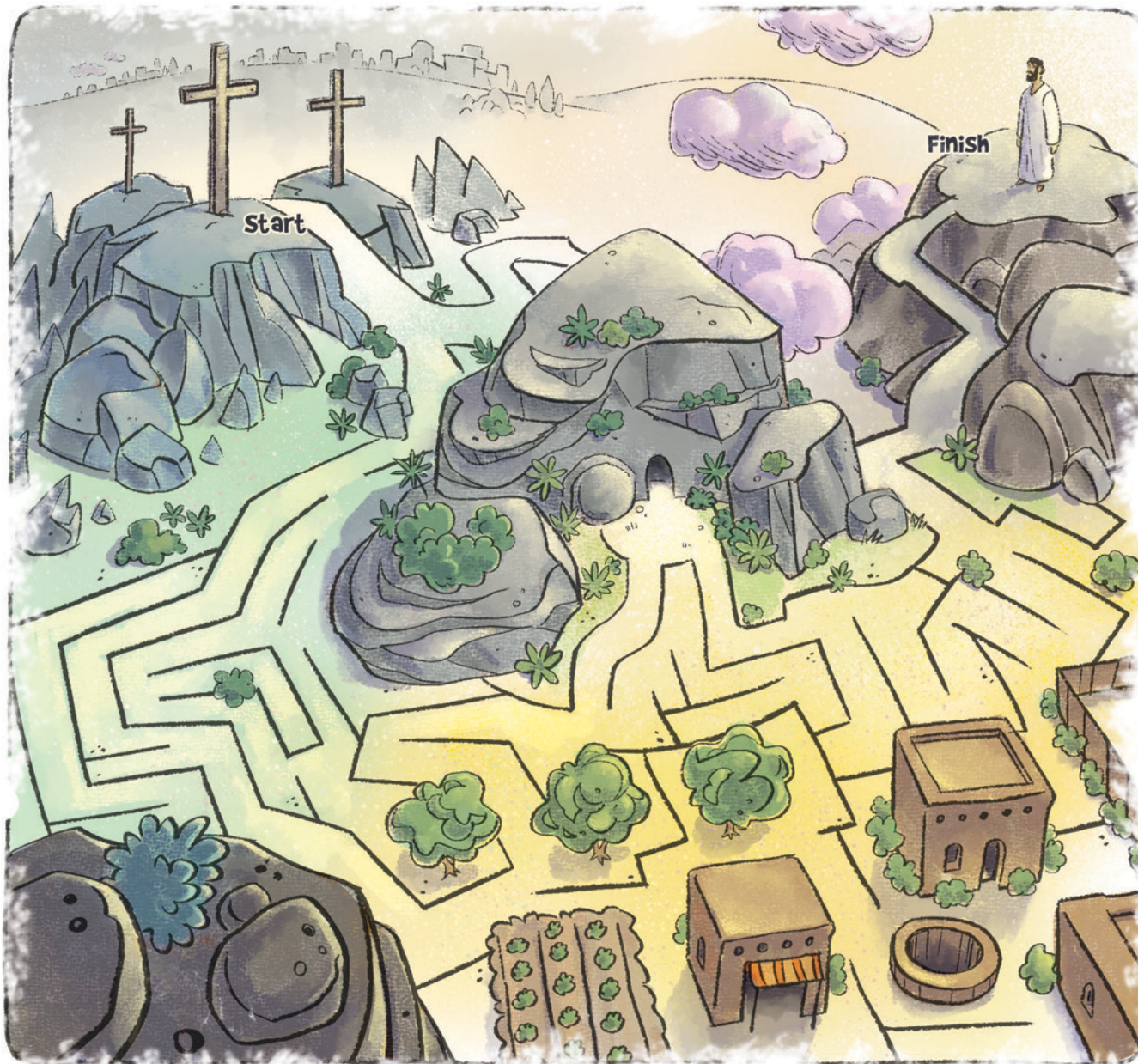
# Bleak and Beautiful

**INSTRUCTIONS:** Color the picture using the number key below.



Recommended Age: Younger Kids





**He's Alive** | Find the path from the cross to the tomb and then to Jesus.

## Easter Scramble

Unscramble the key words from today's Bible story.

### **AISESMH**

This name for Jesus means "anointed one."

### **AITLEP**

This governor handed Jesus over to the crowds.

### **OTNHRS**

Jesus' crown was made of these.

### **AICTURN**

This split from top to bottom when Jesus died.

### **ONTES**

Jesus' tomb was sealed with this.

### **IAELLEG**

Jesus said His followers would see Him here.

### **SUSEJ**

He greeted the women and they worshiped Him.

### **IRTHD**

Jesus rose from the dead on this day.

Recommended Age: Older Kids



